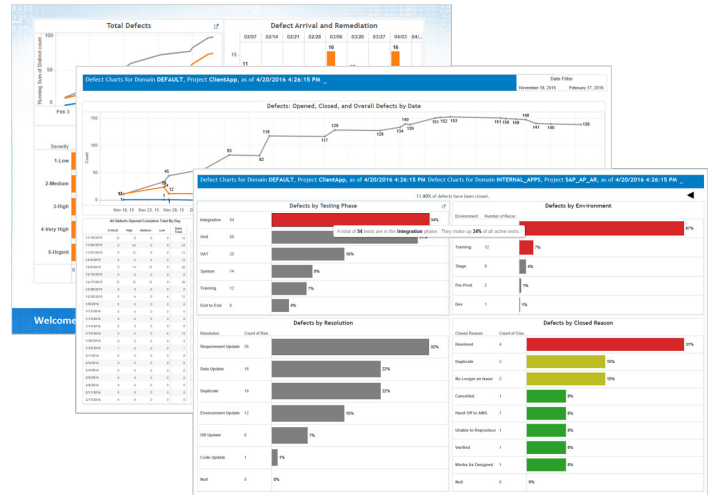


OARS for HPE ALM

Organizational excellence is not a destination but rather a continuous improvement journey. And you can't improve what you don't measure. Measurement leads to understanding, understanding leads to control, and control leads to improvement.

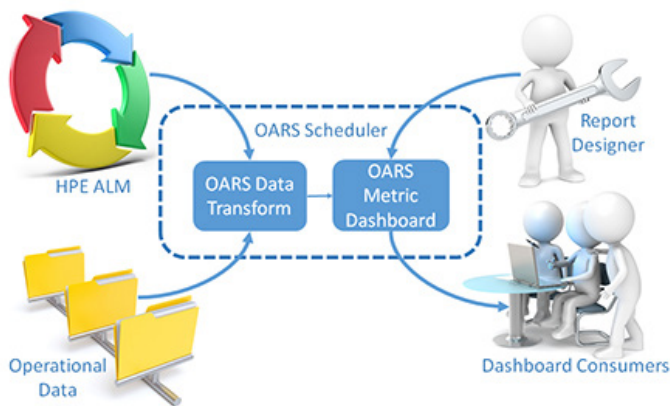
So how do you measure today? If you're like most organizations, you have plenty of raw data but few measurable metrics. Utilizing a configurable capability and proven techniques, Orasi helps you produce customized and cost-effective dashboards and metrics. Orasi Advanced Reporting Solution (OARS) for HPE ALM is powered by the leading data analytics tool, Tableau, and empowers your decision makers with data-driven insights, so they can monitor progress and improve effectiveness of your projects. Regardless of your organization's current reporting maturity, OARS enables you to make meaningful decisions based on proven metrics.



Transform Data into Information

Project team members follow formal processes, document test cases, link test cases to requirements and defects to test cases, manage defects, execute test cycles, automate tests, plan cycles and releases, and much more. All of these activities generate a data trail. Reports present data in a contextually significant manner, transforming it into usable information for consumers.

OARS automates the data extraction and transformation into templates, providing predefined metrics and key performance indicators (KPIs) in consumer-friendly dashboards, scorecards, and reports. This transforms your raw data into actionable information. These are the measurements you need to make informed decisions and improve your organization.





Reporting Assets

The OARS Metrics and KPI Catalog is a living document that contains a collection of distinct metrics and KPIs. The catalog defines attributes and methods of calculation, including examples of each. There is also a repository of dashboards and reports defined with the award-winning Tableau user interface. Each template provides everything you need to transform your raw data into actionable charts and graphs. Also, everything is highly customizable, so you can format the dashboards for your unique process.

Some of the key metrics provided include:

| Requirements | Test Plan | Test Lab | Defects | Quality Reports |
|---|--|--|--|---|
| Requirements Coverage to Test Cases Summary Requirement Test Execution Status Requirement Readiness | Test Case Execution Completion Summary Test Case Execution Coverage Test Case Effectiveness Test Case Readiness | Test Execution Summary By Cross Test Set Test Progress by Team/ Individual Execution Summary Test Execution Velocity – Burn Down | Defects by Status, Severity, Priority Defects Removal Efficiency Defects Aging Open and Reopen Trend Defect Steps to Completion Defects by Root Cause and Resolution Defects Opened or Closed Summary by Date Defect to Test Case/ Instance Trend Defects Overall Removal Efficiency Defect to Test Case Trend Defects by Testing Phase, Environment, or Category | Requirements Traceability to/from Requirements Test Cases with/ without Covered Requirements Requirements with/ without Linked Defects Defects with Linked Test Instances/Cases Defects with No Linked Entities Test Instance Execution Planned vs. Actual Defect Steps to Completion Defect Churn Audit and History Tables |

OARS Implementation

Your OARS implementation not only includes the software necessary to produce the dashboards described above, but it also includes the quality professional services you need to determine your personalized metrics. Orasi will help you customize the extraction logic to your unique configuration and assist you in defining the transformation necessary to standardize your metrics. We'll also teach you how to adapt the dashboards for your needs, including project-specific requirements where necessary.

A typical OARS implementation includes the following phases:

- Preparation - Review data gathering practices and existing data assessment
- Planning - Clarify and identify metrics and KPIs to be reported
- Design and Build - Develop data extracts and report templates
- Test and Debug - Validate automated solution against production systems
- Stakeholder Review - Produce engagement summary, demo, and review functionality
- User Acceptance - Support initial report deployment
- Mentorship - Mentor technical resource(s) on how to maintain and extend solution

