

# RM Publisher

Orasi™ Software's RM Publisher™ is a utility that enables companies to harness the full potential of Borland®'s CaliberRM® and HP Quality Center software by publishing requirements from CaliberRM to Quality Center. This ensures the best requirements-to-test case coverage and reporting available, while offering your development and quality assurance (QA) teams the flexibility to use the tools that best fit their needs.

RM Publisher integrates the requirement tree in CaliberRM with the requirements tab in Quality Center or HP TestDirector software, allowing baselined requirements and custom fields to be shared with the QA team. The business subject matter experts (SMEs) and business analysts are able to work in CaliberRM to manage requirements, knowing that changes will be communicated to the QA team for proper testing. QA can see requirements, use the test case wizard in Quality Center to create test cases, execute those test cases, and track software failures, all within Quality Center. The result is a synchronized effort between development and QA, without the added expense of cross-training the teams on tools they don't need.

**How can you ensure that your QA team is in sync with your current requirements?**

**How can you give both your development and QA teams the flexibility to use the tools that best fit their needs?**

**How can you allow your QA team to quickly see the history of all requirements and their related test cases, without requiring them to use a different tool?**

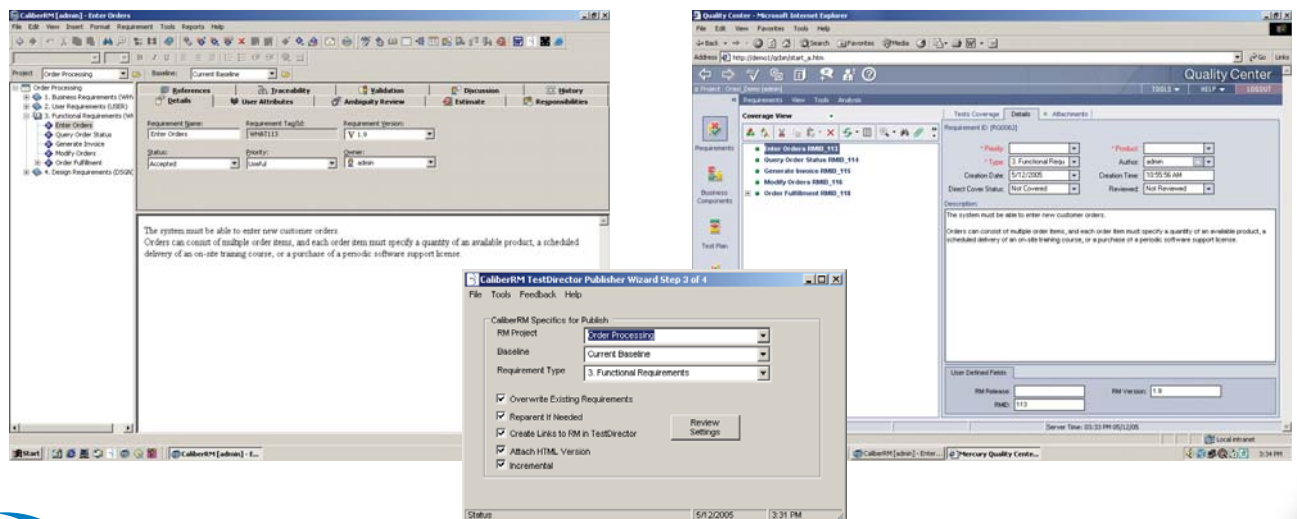
**How can you enable QA to provide valuable metrics using standard reports?**

## Development

A requirements management tool like CaliberRM is essential for managing requirements effectively. Advanced features such as baselines enable organizations to control requirement scope, while the requirements tree offers a clear hierarchical view of requirements. Additionally, business analysts and requirement authors can use CaliberRM's custom fields and advanced formatting tools—including tables and custom fonts—to fully define requirements.

## Quality Assurance

For QA teams, a test management tool like Quality Center is the best way to manage the QA cycle. Quality Center helps QA teams manage and execute the multitude of test cases needed to fully test an application. With the RM Publisher, baselined requirements and the requirement tree can be published directly to the Requirements tab in Quality Center. QA teams then can work in the environment they need to make necessary changes to test cases.



The RM Publisher allows requirements in CaliberRM, including the requirement tree and custom fields, to be published to the Requirements tab in Quality Center or TestDirector, allowing the QA team easy access to current requirements for testing.

Custom fields also are published, allowing QA to see important information such as the release, or the customer requesting a requirement. Quality Center's trace notification feature enables testers to be notified when a requirement changes, ensuring that the appropriate test cases can be updated.

Even advanced formatting in CaliberRM is preserved as HTML attachments when requirements are published to Quality Center, to ensure a complete understanding of the requirements to be tested. With requirements published to Quality Center, QA also can provide the organization with valuable metrics—such as test case coverage and requirements-to-defects ratios—using standard Quality Center reports. In addition, QA teams have access to a CaliberRM link inside Quality Center, which allows them to access a requirement in CaliberRM to view it or add a discussion item.

## Features

- Publishes requirements from CaliberRM 6.5 or 2005 to Quality Center 10.0, 9.2, 9.0 or 8.2, or TestDirector 8.0 or 7.6. Requirements and hierarchy are published.
- Supports multiple CaliberRM servers to multiple Quality Center servers. Uses CaliberRM unique IDs for publishing activity to eliminate restrictions around migrating Quality Center databases from server to server.
- Publishes owner, requirement type, description, CaliberRM ID, and CaliberRM Version fields.
- Sends JPG and other images from CaliberRM Description field during publish.
- Allows up to 24 custom fields to be published from CaliberRM to Quality Center.
- Uses the full APIs of both CaliberRM and Quality Center and is written in .NET. All updates are through supported interfaces and follow security rules in both products.
- Places a CaliberRM link inside Quality Center as an attachment on each requirement. This allows QA to navigate to a requirement in CaliberRM to view it or add a discussion item.
- Creates CaliberRM traces to test requirements for bi-directional integration.
- Saves a history of requirements changes for each requirement as an HTML attachment inside Quality Center. This full rich text history, including tables, allows the tester to see what changed in the requirement from the last publish and quickly determine if they need to update their test case to support a new change in the application behavior.
- Allows incremental changes, causing only requirements that have been changed inside CaliberRM to be published during updates to a baseline. As a result, testers are able to use HP Software's trace notification technology to get emails when a test case they are working on has been changed.
- Allows all publish options to be turned on or off as needed.
- Tracks publish updates through audit logs. These logs can be compared to the total number of requirements inside CaliberRM to ensure that all requirements were published.

## System Requirements

Operating System: Windows 2000 SP4 or Windows XP SP1

CPU: PIV 1Ghz

Disk: 15 Mb disk space

Memory: 512MB Ram

.NET 2.0 Framework

CaliberRM SDK installed

HP TestDirector Connectivity API installed

## Benefits

*Keep your QA team in sync with the current requirements for a project.*

*Allow your development and QA teams the flexibility to use the tools that best fit their needs while improving productivity and product quality.*

*Reduce training costs by not requiring teams to be cross-trained on tools they don't need.*

*Allow your QA team to view the history of all requirements and their related test cases within a single interface.*

*Enable QA to provide valuable metrics such as test case coverage and requirements-to-defects ratios.*

